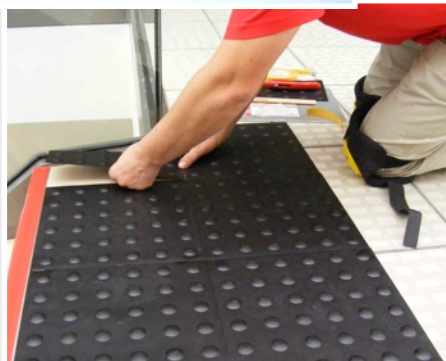
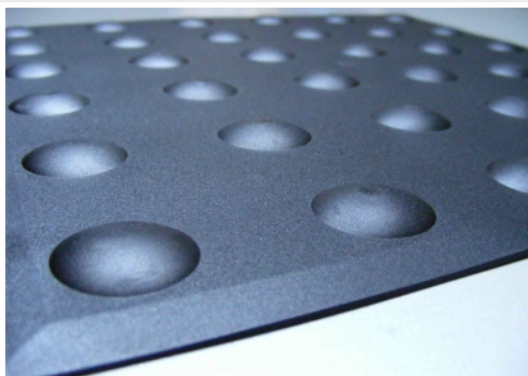
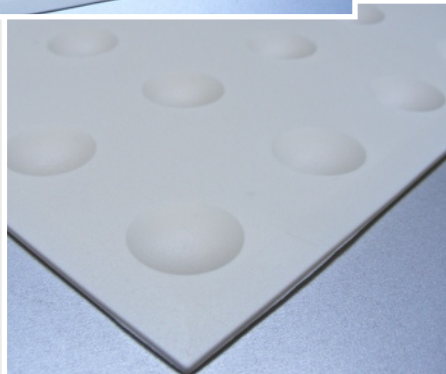
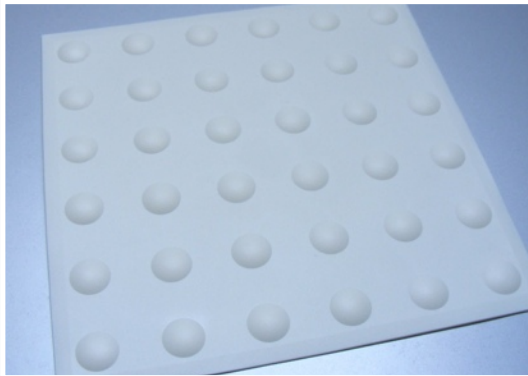


# Technical Data Sheet for Indoor and Outdoor Desmopan® Tactile Ground Surface Indicators

Tactile Tiles “Bonn” (pre-treated with adhesive)



**Dimensions:** 300 mm x 300 mm, the tiles taper at the edge to a height of 1 mm

**Protrusions:** dome shapes, number: 36; the number, shape, height and layout of the protrusions as well as the gaps between them can be tailored to individual requirements.

**Area of use I:** in buildings, on almost all floor surfaces (e.g. stone, PVC, carpet etc.)

**Area of use II:** outdoors, on almost all ground surfaces

**Period of use:** permanent or temporary

**Usage:** draw attention to junctions and areas of risk (especially on steps and stairs)

**Especially suitable for:** those with a visual impairment, reducing vision due to ageing or orientation problems e.g. after an accident or stroke.

**Material:** Desmopan® by Bayer is a thermoplastic polyurethane (TPU), developed by Bayer MaterialScience, which excels itself through its resistance to abrasion and its mechanical strength, even when subjected to extreme use.

**Hardness:** 50-60 Shore D in accordance with ISO 868, impact resistant in accordance with DIN EN ISO 180

**Tensile strength:** > 50 MPa in accordance with DIN 53504

**UV-stability:** 2 years world-wide, higher values possible subject to higher prices

**Flammability:** fulfils the test requirements of FMVSS 302 as well as DIN 4102-1 B1 and UL94 HB

**Temperature range:** -40°C to +80°C

**Special features:** the guidance system Odile® doesn't just provide tactile information, but also, through the almost unlimited colour options, can help those without a visual impairment orientate themselves in unfamiliar areas.

**Application I (indoors):** floors must be clean, dry and free from dust and grease. Simply remove the strip on the back, stick and press. Tiles can be laid with the help of a template (not included in the delivery). Can be applied at any time i.e. to existing floor surfaces.

**Application II (outdoors):** depending on the ground surface it may be necessary to pre-treat the surface with a bonding agent or primer. The adhesive is applied, with the help of an applicator gun, in lines and spread across the area using a notched adhesive spreader. Next, the clean and activated tiles are pressed flat onto the adhesive. The thickness of the adhesive layer should be approx. 2mm-3mm after the tiles have been laid. The optimal temperature for the application of the materials/substances: 15°C to 25°C.

**Standards:** fulfils DIN 32984 and DIN 32975